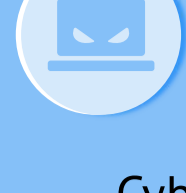


Why you Need an Evolved SIEM RIGHT NOW



Cybersecurity concerns are wide-ranging, from budget limitations to a dearth of skilled employees and the ability to acquire and integrate security tools. Fortunately, an evolved SIEM can influence positive outcomes on all aspects of the incident detection and response (IDR) lifecycle.



MODERN SIEMS ADDRESS GROWING SECURITY PRESSURES

At the end of 2017 all **160,000** US Department of Defense contractors and subcontractors had to **meet regulations**

Source: Cybersecurity Ventures

In 2018 **42%** of companies will need to **increase** their IT staff by more than **10%**

Source Frost & Sullivan

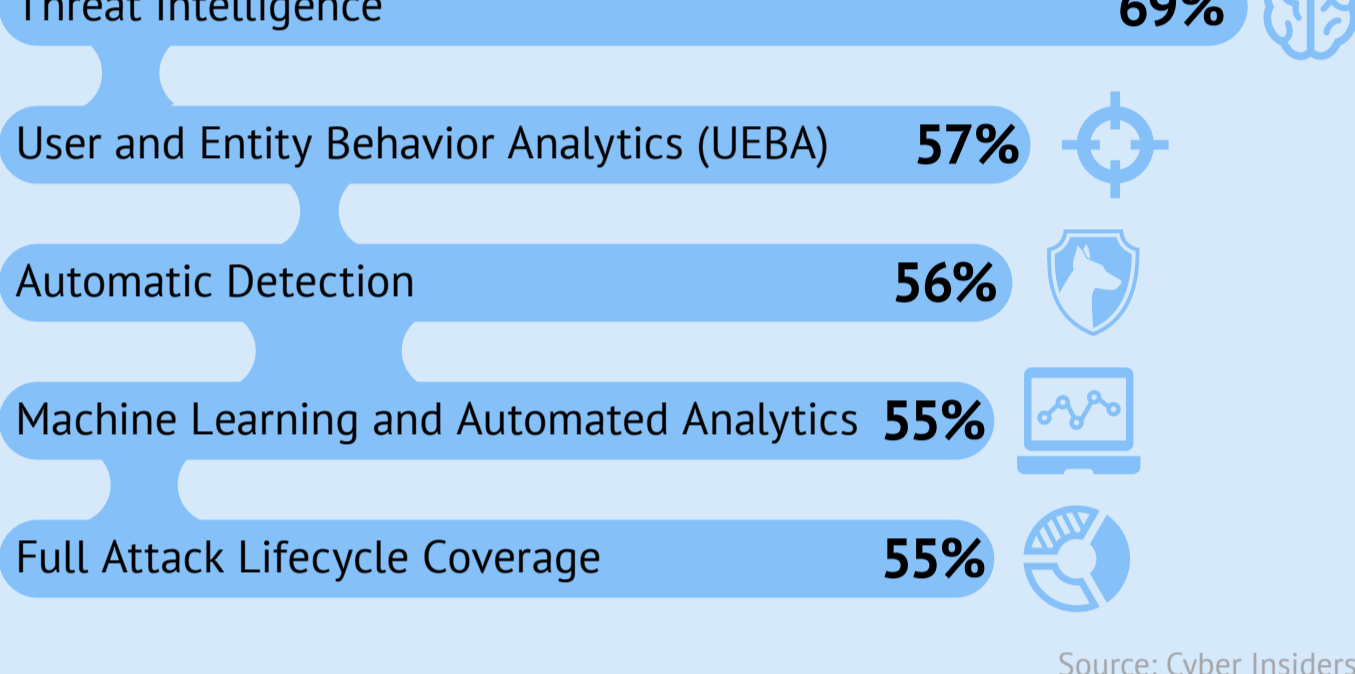
76% of SOC specialists say not enough time is spent in **advanced threat hunting** in the SOC

Source: Cyber Insiders



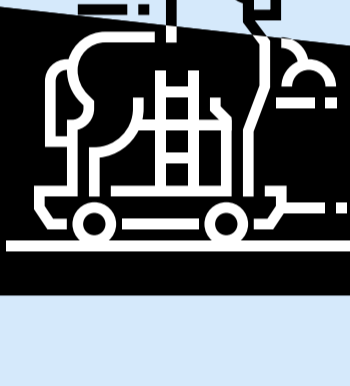
DEALING WITH THREATS IS GETTING HARDER ALL THE TIME

The Most Important Threat Hunting Capabilities



Source: Cyber Insiders

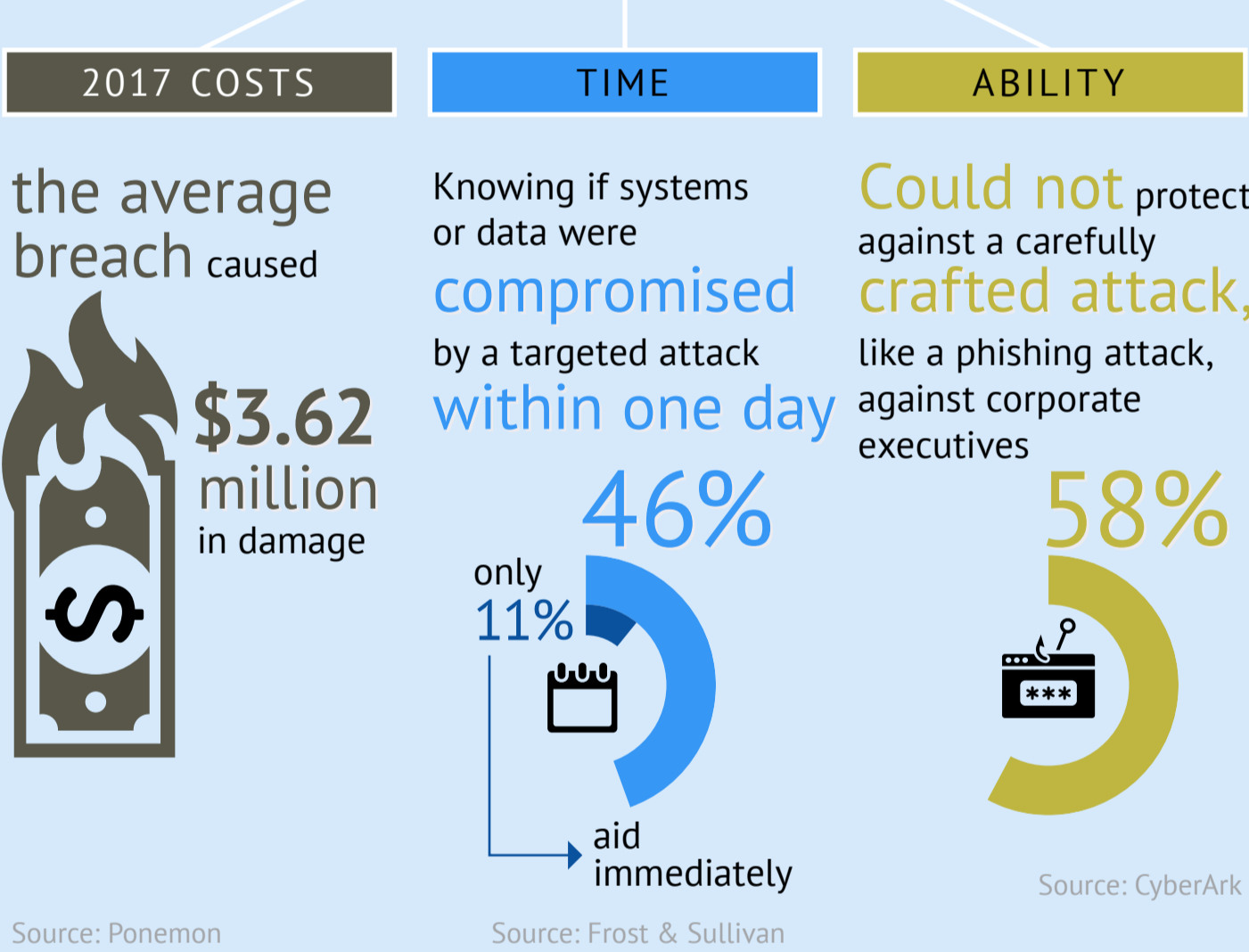
In 2017, there were **10,316** unique banking Trojan variants



Source: RSA



THE COSTS OF ATTACK ARE LARGE AND MEASURABLE



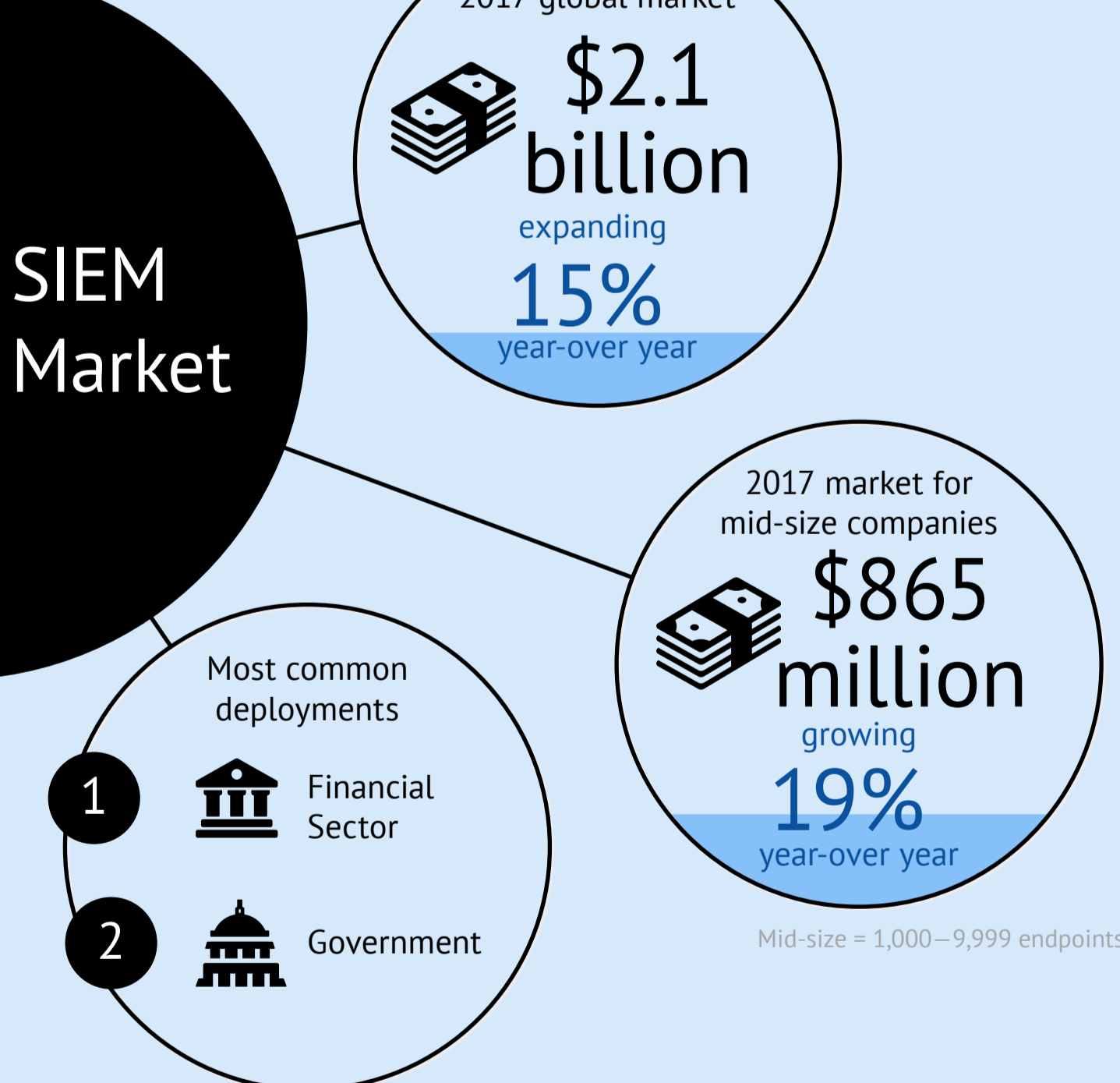
Source: Ponemon

Source: Frost & Sullivan

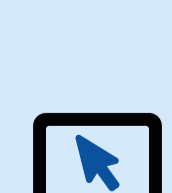
Source: CyberArk



THE GLOBAL SIEM MARKET IS EXPANDING



Source: Frost & Sullivan



TAKE THE **SIEM maturity assessment** FOR INSIGHT ABOUT YOUR SIEM IN THE CONTEXT OF YOUR OVERALL SECURITY POSTURE

Note Commissioned by RSA

About RSA

RSA NetWitness® Platform is an evolved SIEM and threat defense solution that empowers security teams to rapidly detect, understand the full scope of a compromise and automatically respond to the threat before damage is done. With a design that aligns business context to security risks, RSA NetWitness Platform closes the gaps of technology-only solutions and ensures that IT security is optimized to support an organization's strategic goals. RSA NetWitness Platform delivers unsurpassed breadth of visibility and depth of analytics that make security analysts more effective and efficient.